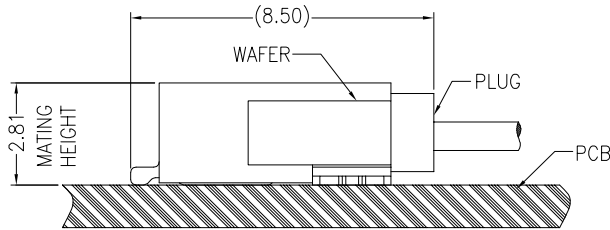
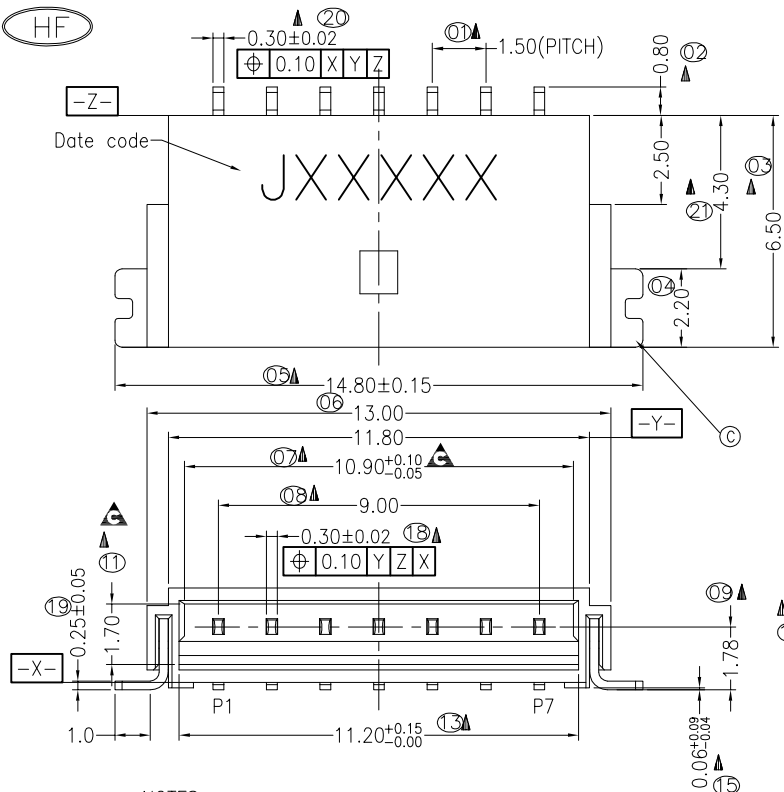
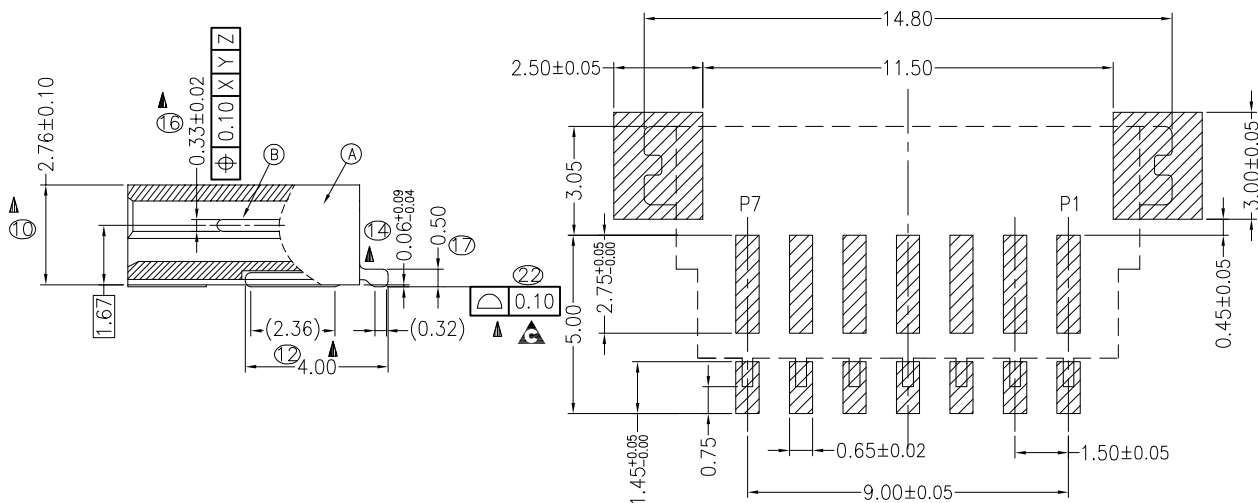


RoHS

HF



MATING DRAWING





RECOMMENDED PCB LAYOUT

NOTES:

1. ELECTRICAL CHARACTERISTICS:
 - 1-1. CONTACT CURRENT RATING: 3.5AMPERE MAX.PER CONTACT.
 - 1-2. LOW LEVEL CONTACT RESISTANCE:20 MILLIOHMS MAX.
 - 1-3. INSULATION RESISTANCE: 100MΩ MIN. AT 250V DC
 - 1-4. DIELECTRIC WITHSTANDING VOLTAGE: 100V RMS AT 60HZ FOR 1 MINUTE.
 - 1-5. OPERATING TEMPERATURE: -40℃ TO 85℃
2. MECHANICAL CHARACTERISTICS:
 - 2-1. DURABILITY: 30 MATING CYCLES.
 - 2-2. MATING FORCE:2.5Kgf Max.
 - 2-3. UNMATED FORCE:0.4Kgf~2.0Kgf INITIAL,0.23Kgf Min AFTER TEST.
3. ⊗ MARK IS FAI DIM. ▲ MARK IS MARJ DIM. ▲ MARK IS CPK DIM.
4. PART NO: WWACO307-0D00

GOLD PLATING 4u"

C	PEG	2	Copper alloy,T=0.25mm	Sn 100 u",ALL OVER Ni
B	TERMINAL	7	Copper alloy,T=0.30mm	4u"Au ON CONTACT ARER, G/F ON SOLDER AREA, ALL OVER Ni 50 u" Min
A	HOUSING	1	LCP E130i UL94 V-0	BLACK
NO.	PARTS	Q'TY	MATERIAL	PLATING&COLOUR

		一般公差 GENERAL TOLERANCE		绘图 DR.		
		X.X ±0.15	X* ±2*	审核 CHK.		
		X.XX ±0.10	X.X* ±1*			
		X.XXX ±0.05	▲ MAJOR DIM.			
		单位 UNIT	核准 APPD.		品名 TITLE	
		mm	 		1.5 PH 7P WAFER(邦)	

WJCT
苏州伟聚电子科技有限公司

料号 PART NO.
WWACO307-0D00

图号 DRAWING NO.
655-0000-0003

比例 SCALE	SHEET	版次 REV.
1/1	1/1	B

版次 REV.	日期 DATE	变更内容 DESCRIPTION
B	2016.06.15	增加尺寸管控
A	2014.07.30	初版发行