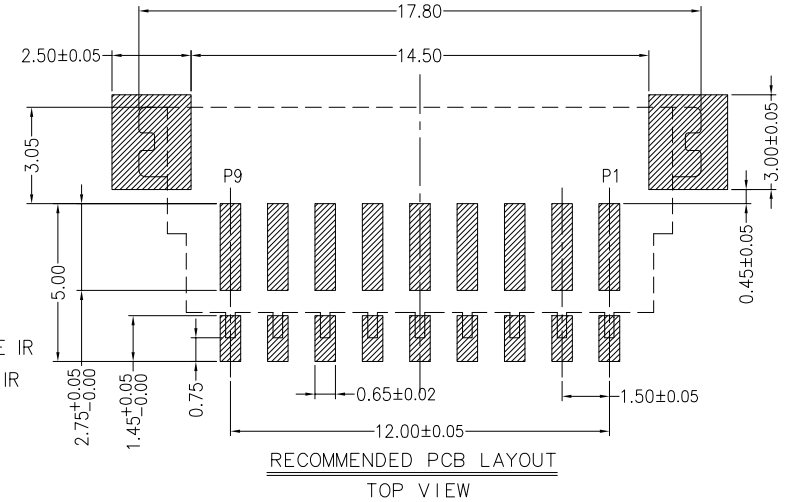
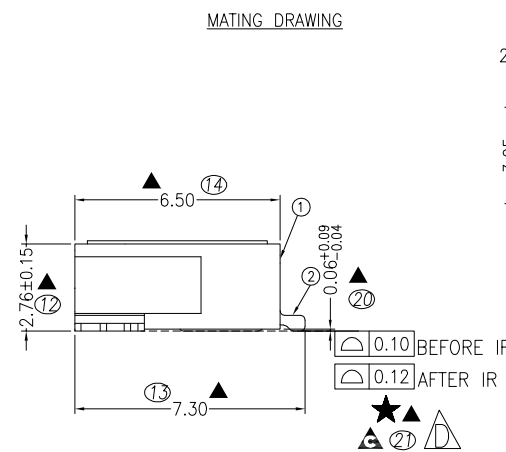
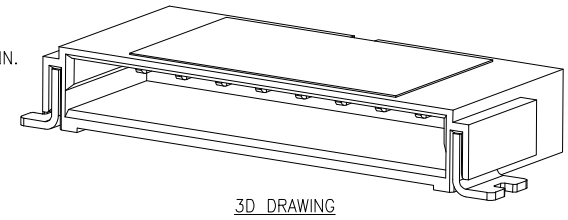
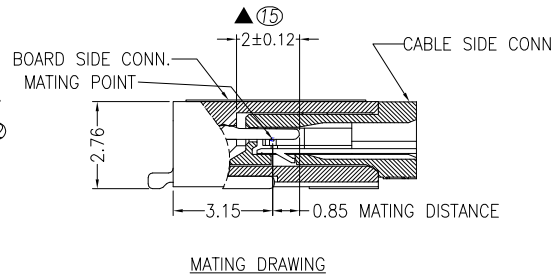
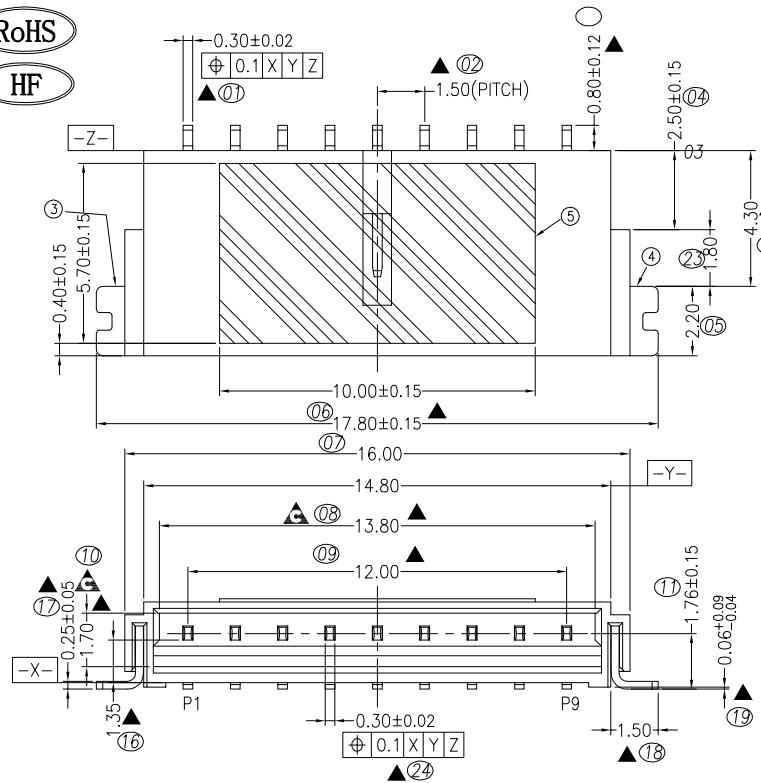


RoHS
HF



- NOTES:
1. DIMENSIONS SHALL BE INTERPRETED PER ASME Y14.5M-1994.
 2. ELECTRICAL CHARACTERISTICS:
 - 2-1. CONTACT CURRENT RATING: 3AMPERE MAX.PER CONTACT.
 - 2-2. LOW LEVEL CONTACT RESISTANCE:20 MILLIOHMS MAX.
 - 2-3. INSULATION RESISTANCE: 100MΩ MIN. AT 250V DC
 - 2-4. DIELECTRIC WITHSTANDING VOLTAGE: 100V RMS AT 60HZ FOR 1 MINUTE.
 3. MECHANICAL CHARACTERISTICS:
 - 3-1. DURABILITY: 30 MATING CYCLES.
 - 3-2. PIN RETENTION FORCE: 0.3KGF Min.
 4. OPERATING TEMPERATURE: -40℃ TO 85℃
 5. THE PRODUCTS SHOULD MEET THE R.O.H.S REQUIREMENT.
 6. (X) MARK IS FAI DIM. (▲) MARK IS CPK DIM. (★) MARK IS SPECIAL CHARACTERISTIC DIM. THE (▲) MARK SHOWS DIMENSION OF IMPORTANT

BEFORE IR ▲
AFTER IR ▲

⑤	PI-FILM	1	POLYIMIDE	BROWN POLYIMIDE FILM	
④	RIGHT METAL EAR	1	COPPER ALLOY	50u* MIN Ni UNDER PLATING OVER ALL 50u* MIN Sn PLATING OVER ALL	
③	LEFT METAL EAR	1	COPPER ALLOY	50u* MIN Ni UNDER PLATING OVER ALL 50u* MIN Sn PLATING OVER ALL	
②	CONTACT	9	COPPER ALLOY	50u* MIN Ni UNDER PLATING OVER ALL 4u* MIN Au FLASH PLATING ON CONTACT AREA	
①	HOUSING	1	THERMOPLASTIC	N/A	UL94V-0, BLACK
ITFM	DFSC	O'TY	MATFRIAL	TRFATMNT	RFMARK

REV.	REVISION RECORD	DATE	GENERAL TOLERANCES	SCALE: 1:1	NAME	DATE	 苏州伟聚电子科技有限公司 TITLE: 1.5 PITCH WAFER SMT TYPE	PART.NO:	WWAC0109-0A00
E	修改IR前后平面度管控标准	2018.01.12	LINEAR ANGLES	APPROVED				DWG.NO:	655-0000-0001
C	增加尺寸管控	2016.06.21	0.0 ±0.20 X'REF ± 5'	DESIGNER				REV:	E
B	ADD SPECIAL CHARACTERISTIC DIM	2014.03.24	UNIT: MM 0.00 ±0.10 X' ± 2'	DRAWN				SHEET:	2/1
A	INITIAL RELEASE	2014.03.05	SIZE: A4 0.000±0.05 X'X' ± 1'						