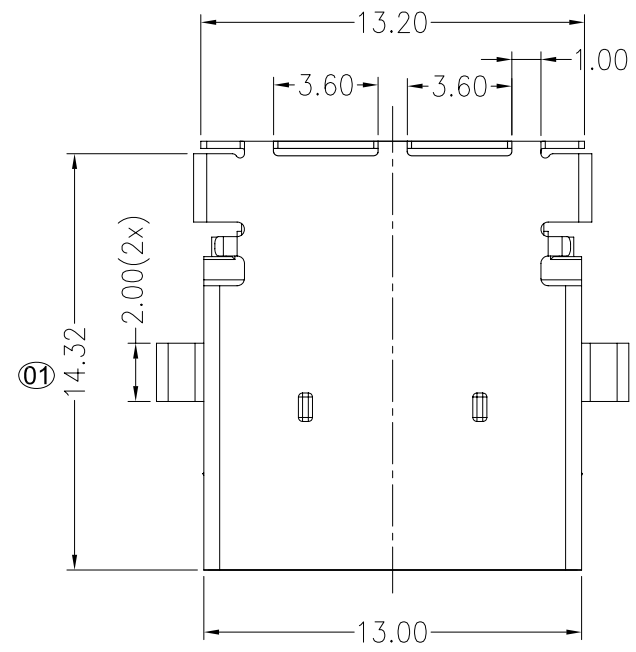
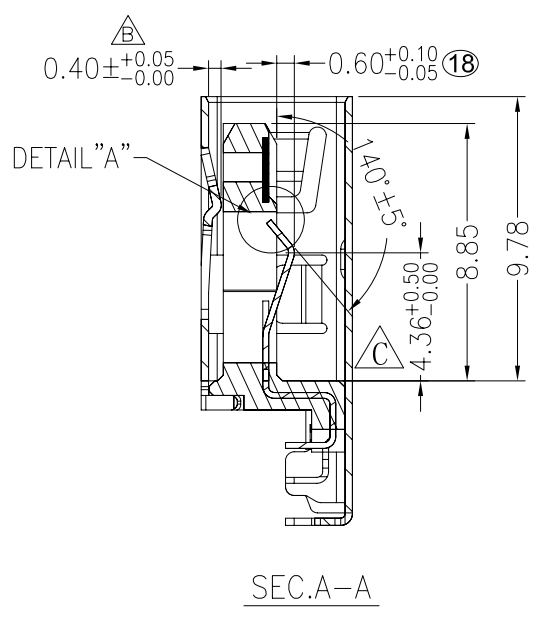
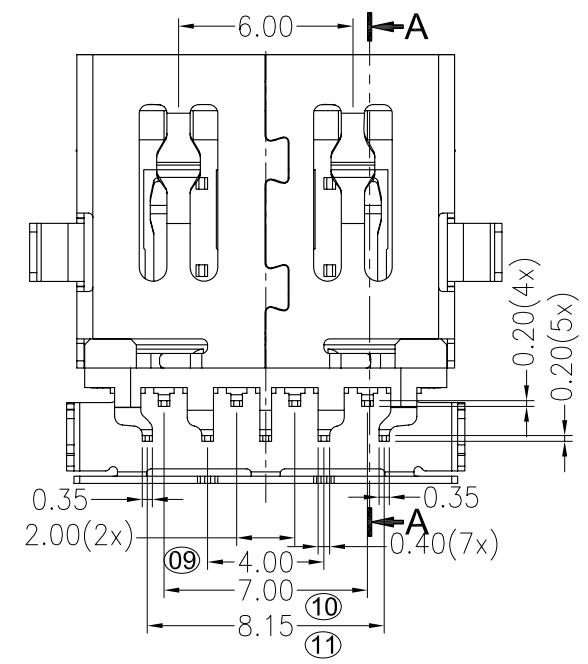
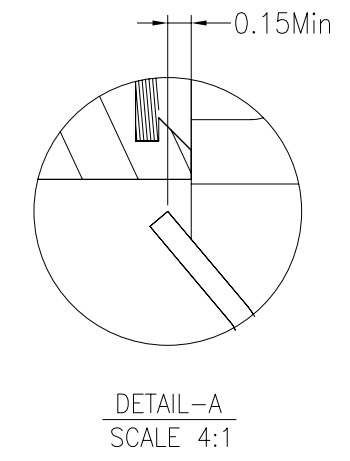
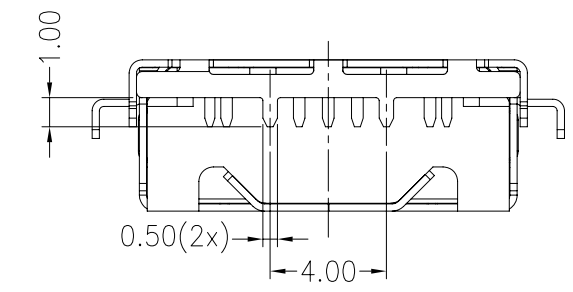
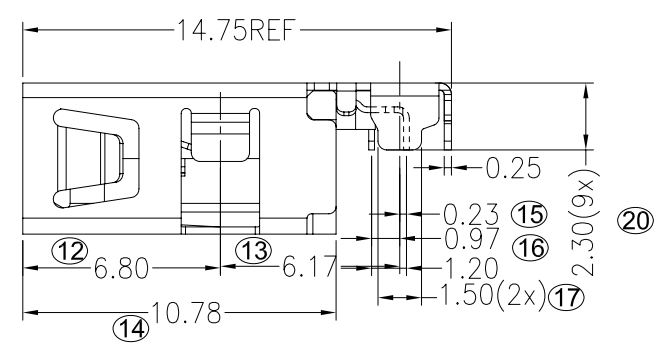
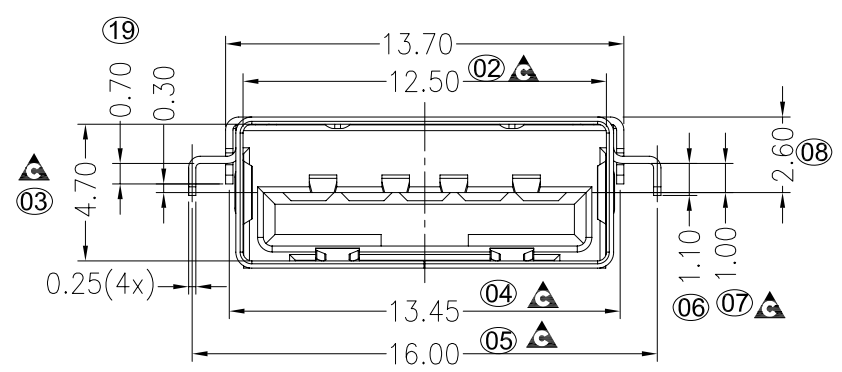


RoHS
HF



PIN	SIGNAL NAME	DESCRIPTION	MATING SEQUENCE
1	VBUS	POWER	SECOND
2	D-	USB 2.0 DIFFERENTIAL PAIR	THIRD
3	D+		
4	GND	GROUND FOR POWER RETURN	SECOND
5	StdA_SSRX-	SUPERSPEED RECEIVER DIFFERENTIAL PAIR	LAST
6	StdA_SSRX+		
7	GND_DRAIN	GROUND FOR SIGNAL RETURN	
8	StdA_SSTX-	SUPERSPEED TRANSMITTER DIFFERENTIAL PAIR	
9	StdA_SSTX+		
Shell	Shield	CONNECTOR METAL SHELL	FRIST

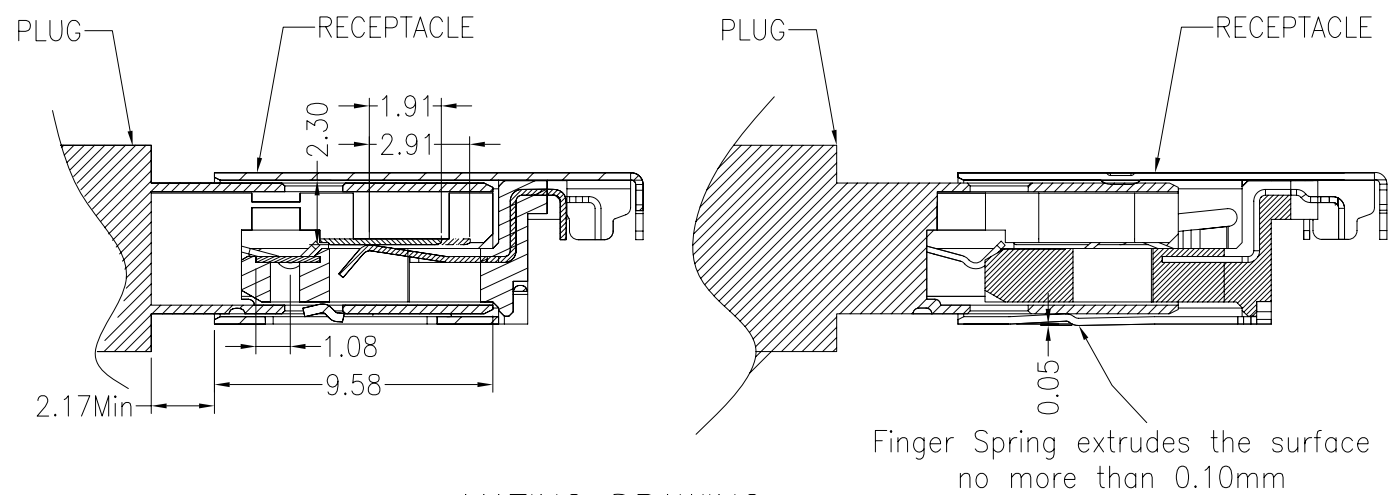
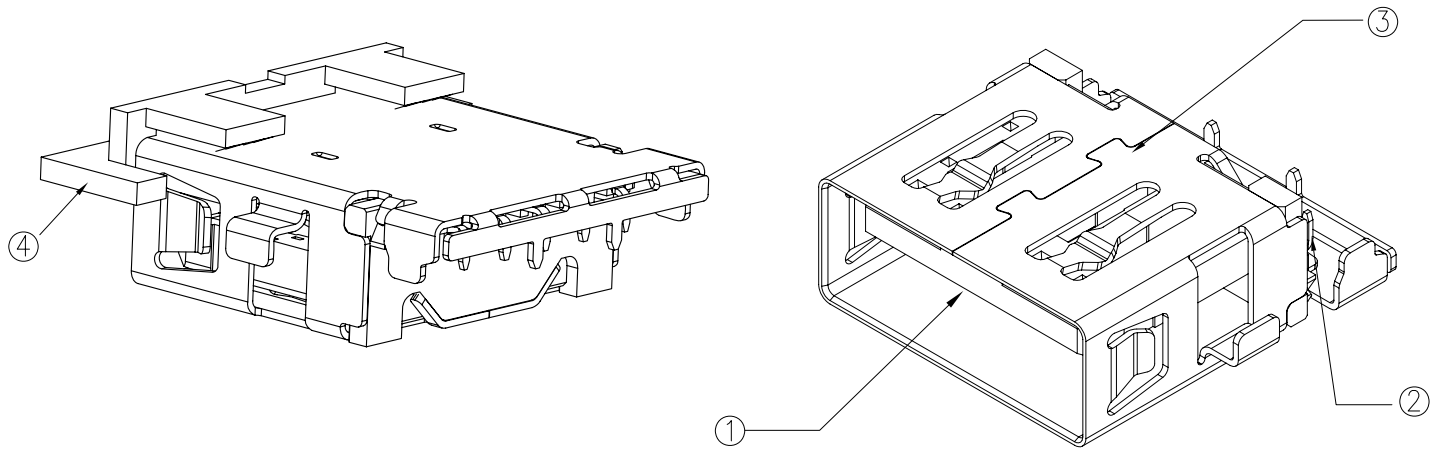
NOTE:
 1.MATERIAL:
 1.1 INSULATOR:LCP130I UL94V-0;BLACK
 1.2 CONTACT:C5210-EH(T=0.20mm)
 1.3 SHELL:SUS304-1/2H(T=0.25mm)
 1.4 CAP:LCP130I UL94V-0;BLCAK
 2.ELECTRICAL CHARACTERISTICS;
 2.1 CONTACTRESISTANCE:30mΩ Max
 2.2 CONTACT CURRENT RATING:1.5A
 2.3 DIELECTRIC WITHSTANDING VOLTAGE:500 V R.M.S.
 2.4 INSULATION RESISTANCE 100 MEGOHMS Min
 2.5 OPERATING TEMPEROTURE:-40°C ~ 85°C
 3 MECHANICAL CHARACTERISTICS:
 3.1 MATING FORCE:25 N Max
 3.2 UNMATED FORCE:7N~20N INITIAL; 1000CYCLES:CHANGE NO MORE THAN 50% FROM INITIAL, 10000CYCLES: FUNCTION OK.
 3.3 DURABILITY:10,000 CYCLES
 4.⊗ MARK IS FAI DIM. ▲ MARK IS CPK DIM.



NO.	PARTS	Q'TY	MATERIAL	PLATING&COLOUR
4	CAP	1	LCP130I UL94 V-0	BLACK
3	SHELL	1	SUS304-1/2H T=0.25mm	ALL OVER Ni
2	TERMINAL	9	C5210-EH,T=0.20mm	4u" Min Au ON CONTACT ARER Sn 100 u"ON SOLDER AREA ALL OVER Ni 50 u" Min
1	HOUSING	1	LCP130I UL94 V-0	BLACK

REV.	REVISION RECORD	DATE	GENERAL TOLERANCES	SCALE:1:1	NAME	DATE	SUZHOU WEIJU ELECTRONIC TECHNOLOGY CO.,LTD	PART.NO:
A	INITIAL RELEASE	2014. 12. 05	LINEAR	APPROVED				WUSF3909-0D00
B	ADD CONTACT DIMENSION	2016/05/17	0.0 ±0.15	DESIGNER				DWG.NO: 605-0000-0030
			0.00 ±0.10	DRAWN				REV: BX1 SHEET: 1/2

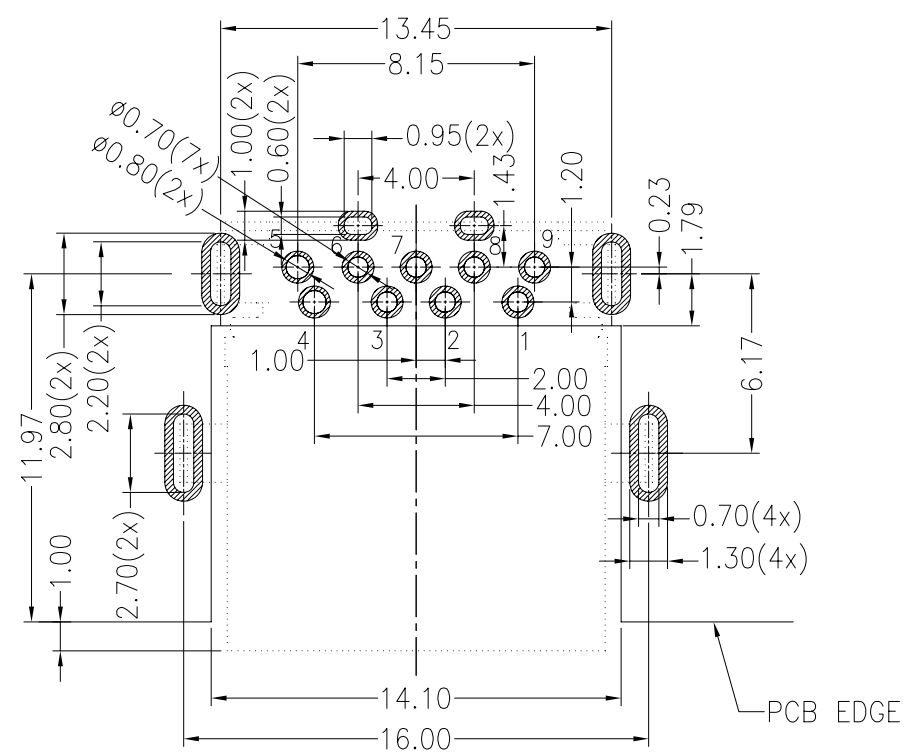
RoHS
HF



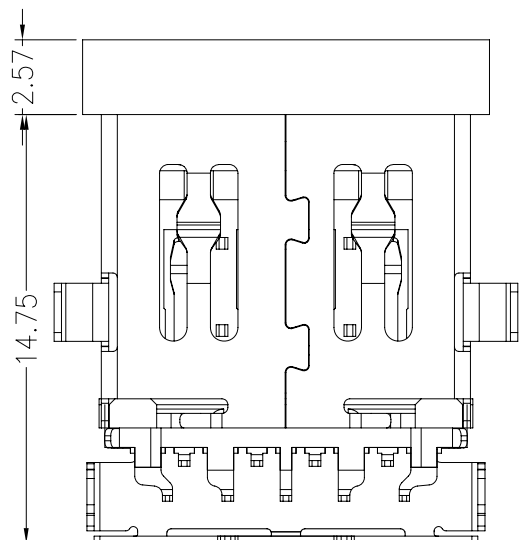
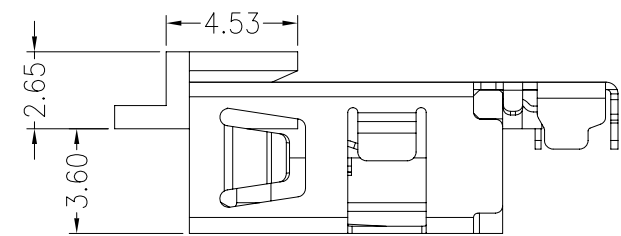
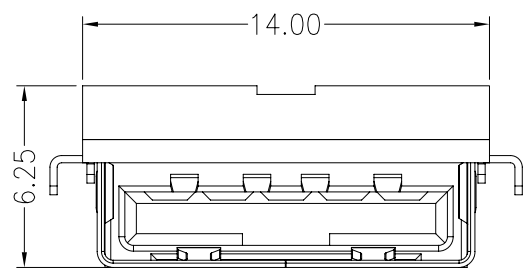
MATING DRAWING

WITH CAP

WITHOUT CAP



TOLERANCE: ± 0.05 , THICKNESS: 0.7mm
RECOMMENDED PCB LAYOUT



WITH CAP DIMENSIONS

REV.	REVISION RECORD	DATE		GENERAL TOLERANCES		SCALE:1:1	NAME	DATE	SUZHOU WEIJU ELECTRONIC TECHNOLOGY CO.,LTD TITLE: USB3.0 SLIM REVERSE DIP TYPE CL1.0	PART.NO:
A	INITIAL RELEASE	2014. 12. 05			LINEAR	ANGLES	APPROVED			
B	ADD CONTACT DIMENSION	2016/05/17		0.0 ± 0.15	X'REF $\pm 6^\circ$	DESIGNER				DWG.NO: 605-0000-0030
			UNIT: MM	0.00 ± 0.10	X' $\pm 3^\circ$	DRAWN				REV: BX1 SHEET: 2/2
			SIZE: A4	0.000 ± 0.05	X'X' $\pm 2^\circ$					