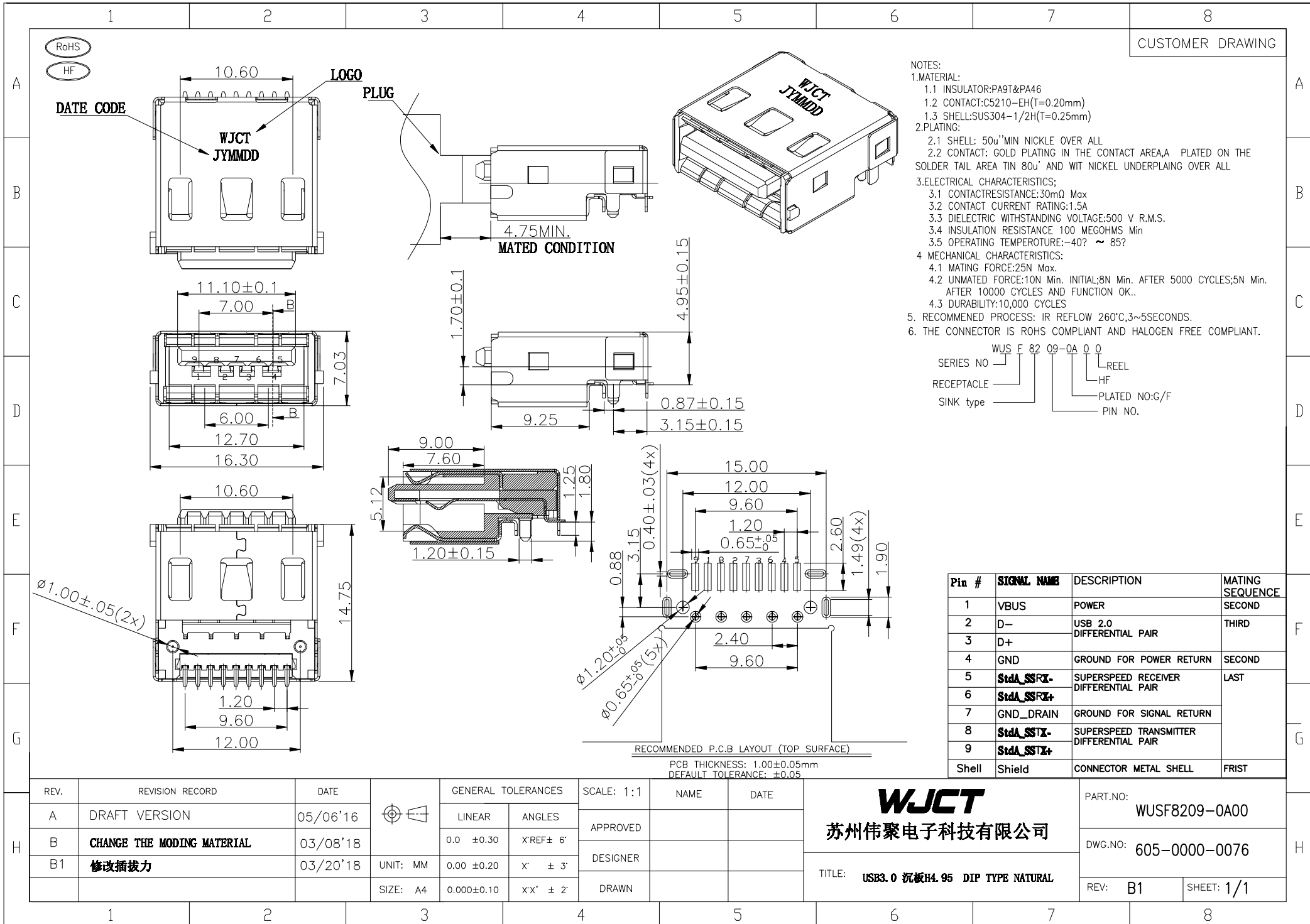


- NOTES:
- MATERIAL:
 - INSULATOR:PA9T&PA46
 - CONTACT:C5210-EH(T=0.20mm)
 - SHELL:SUS304-1/2H(T=0.25mm)
 - PLATING:
 - SHELL: 50u"MIN NICKLE OVER ALL
 - CONTACT: GOLD PLATING IN THE CONTACT AREA,A PLATED ON THE SOLDER TAIL AREA TIN 80u" AND WIT NICKEL UNDERPLAING OVER ALL
 - ELECTRICAL CHARACTERISTICS:
 - CONTACTRESISTANCE:30mΩ Max
 - CONTACT CURRENT RATING:1.5A
 - DIELECTRIC WITHSTANDING VOLTAGE:500 V R.M.S.
 - INSULATION RESISTANCE 100 MEGOHMS Min
 - OPERATING TEMPERATURE:-40? ~ 85?
 - MECHANICAL CHARACTERISTICS:
 - MATING FORCE:25N Max.
 - UNMATED FORCE:10N Min. INITIAL;8N Min. AFTER 5000 CYCLES;5N Min. AFTER 10000 CYCLES AND FUNCTION OK..
 - DURABILITY:10,000 CYCLES
 - RECOMMENDED PROCESS: IR REFLOW 260°C,3~5SECONDS.
 - THE CONNECTOR IS ROHS COMPLIANT AND HALOGEN FREE COMPLIANT.

SERIES NO WUS F 82 09-0A 0 0
 RECEPTACLE HF PLATED NO:G/F
 SINK type REEL PIN NO.

Pin #	SIGNAL NAME	DESCRIPTION	MATING SEQUENCE
1	VBUS	POWER	SECOND
2	D-	USB 2.0 DIFFERENTIAL PAIR	THIRD
3	D+		
4	GND	GROUND FOR POWER RETURN	SECOND
5	StdA_SSRX-	SUPERSPEED RECEIVER DIFFERENTIAL PAIR	LAST
6	StdA_SSRX+		
7	GND_DRAIN	GROUND FOR SIGNAL RETURN	
8	StdA_SSTX-	SUPERSPEED TRANSMITTER DIFFERENTIAL PAIR	
9	StdA_SSTX+		
Shell	Shield	CONNECTOR METAL SHELL	FRIST

RECOMMENDED P.C.B LAYOUT (TOP SURFACE)
 PCB THICKNESS: 1.00±0.05mm
 DEFAULT TOLFRANCE: ±0.05



RoHS
 HF

DATE CODE

LOGO

PLUG

MATED CONDITION

∅1.00±.05(2x)

∅1.20±.08
 ∅0.65±.05(5x)

REV.	REVISION RECORD	DATE	GENERAL TOLERANCES	SCALE: 1:1	NAME	DATE	WJCT 苏州伟聚电子科技有限公司 TITLE: USB3.0 沉板H4.95 DIP TYPE NATURAL	PART.NO: WUSF8209-0A00	
A	DRAFT VERSION	05/06'16	LINEAR	APPROVED				DWG.NO: 605-0000-0076	
B	CHANGE THE MADING MATERIAL	03/08'18	0.0 ±0.30	DESIGNER				REV: B1	
B1	修改插拔力	03/20'18	0.00 ±0.20	DRAWN				SHEET: 1/1	