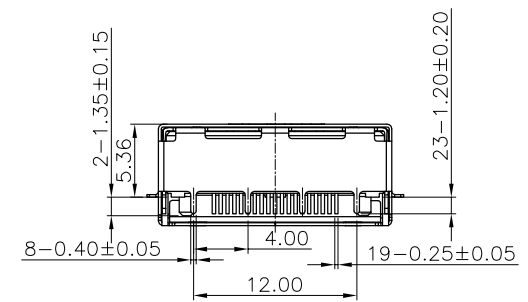
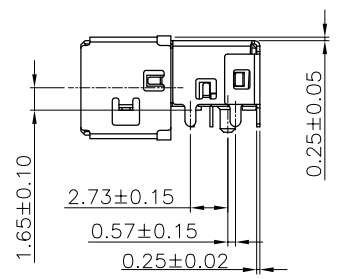
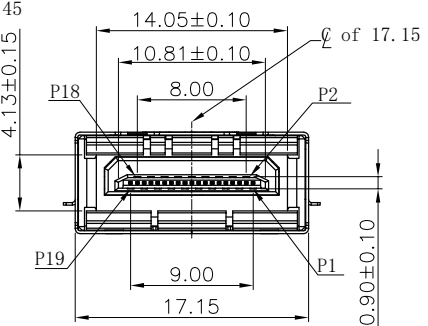
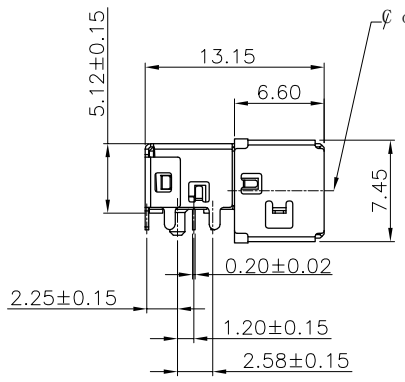
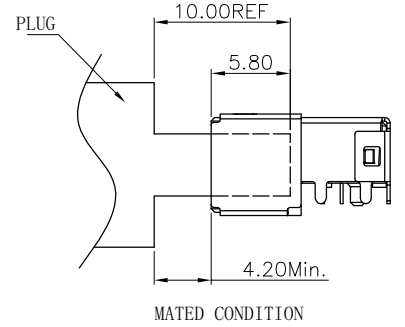
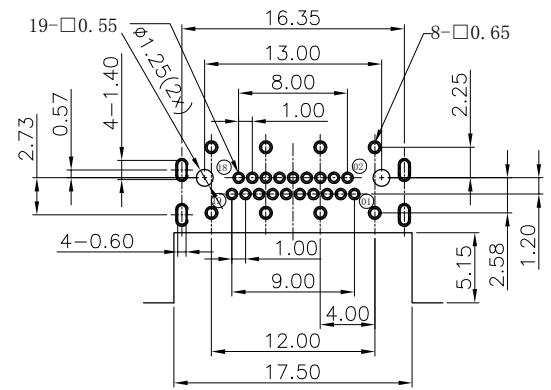
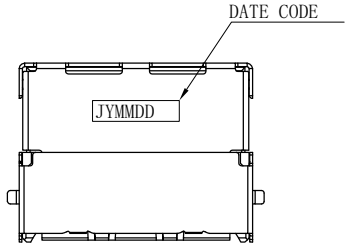
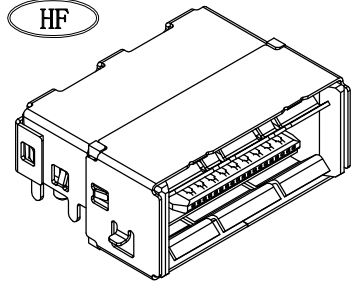
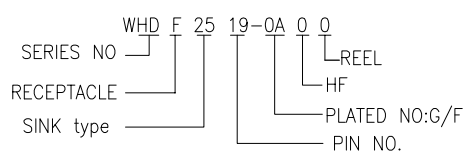


RoHS
HF



- NOTES:
- MATERIAL:
 - HOUSING: LCP, 30%GF, UL94 V-0, HF, NATURAL
 - CONTACT: BRASS
 - SHELL: SUS304
 - PLATING:
 - CONTACT: G/F ON CONTACT AREA, 80u" MIN. MATTE TIN ON SOLDER TAILS, 50u" MIN. NICKEL UNDERPALTING OVER ALL
 - SHELL: 50u" MIN. NICKEL OVER ALL
 - DATE CODE: J (JCTC) Y (YEAR), MM (MONTH), DD (DATE)
 - THE CONNECTOR IS ROHS COMPLIANT AND HALOGEN FREE COMPLIANT
 - MECHANICAL CHARACTERISTICS:
 - MATING FORCE: 40N Max
 - UNMATED FORCE: 7N MIN INITIAL; 1000CYCLES: CHANGE NO MORE THAN 50% FROM INITIAL, 10000CYCLES: FUNCTION OK.
 - DURABILITY: 10,000 CYCLES
 - RECOMMENED PROCESS: IR REFLOW 260° C, 3~5SECONDS.
 - THE CONNECTOR IS ROHS COMPLIANT AND HALOGEN FREE COMPLIANT.



Pin #	SIGNAL NAME	Pin #	SIGNAL NAME
1	TMDS Data2+	2	TMDS Data2 Shield
3	TMDS Data2-	4	TMDS Data1+
5	TMDS Data1 Shield	6	TMDS Data1-
7	TMDS Data0+	8	TMDS Data0 Shield
9	TMDS Data0-	10	TMDS Clock +
11	TMDS Clock Shield	12	TMDS Clock -
13	CEC	14	Utility
15	SCL	16	SDA
17	DDC/CEC GROUND	18	+5V POWER
19	Hot Plug Detect		

REV.	REVISION RECORD	DATE	GENERAL TOLERANCES	SCALE: 1:1	NAME	DATE	PART.NO:								
A	DRAFT VERSION	05/06'16	<table border="1"> <tr> <td>LINEAR</td> <td>ANGLES</td> </tr> <tr> <td>0.0 ±0.30</td> <td>X'REF ± 6'</td> </tr> <tr> <td>0.00 ±0.20</td> <td>X' ± 3'</td> </tr> <tr> <td>0.000±0.10</td> <td>X'X' ± 2'</td> </tr> </table>	LINEAR	ANGLES	0.0 ±0.30	X'REF ± 6'	0.00 ±0.20	X' ± 3'	0.000±0.10	X'X' ± 2'	APPROVED			WHDF2519-0A00
LINEAR	ANGLES														
0.0 ±0.30	X'REF ± 6'														
0.00 ±0.20	X' ± 3'														
0.000±0.10	X'X' ± 2'														
			UNIT: MM	DESIGNER			DWG.NO:								
			SIZE: A4	DRAWN	tanzhiwu	05/06'16	635-0000-0008								
							REV: A SHEET: 1/1								



苏州伟聚电子科技有限公司

TITLE: 5.73H HDMI A TYPE,R/A,DIP