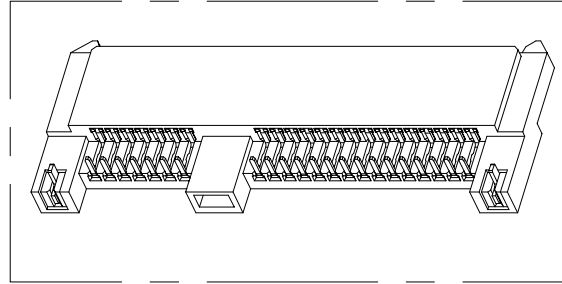
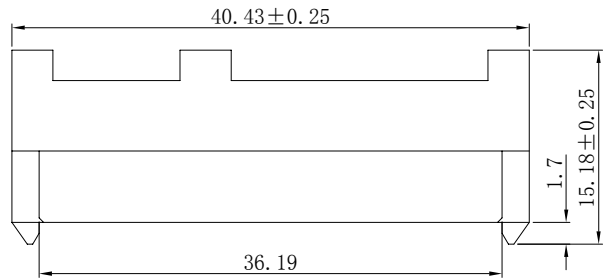
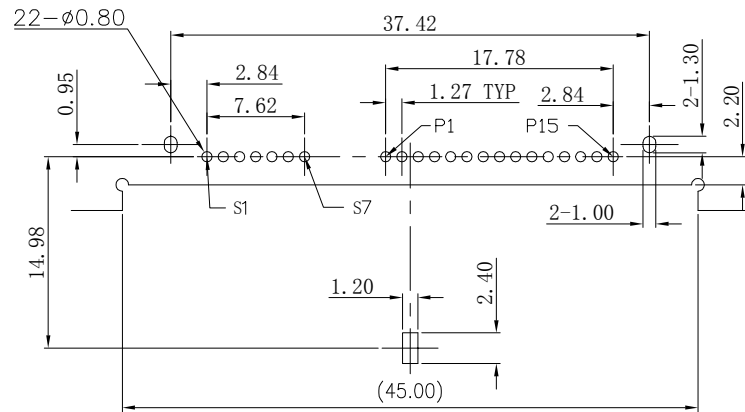
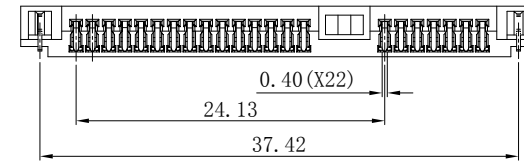
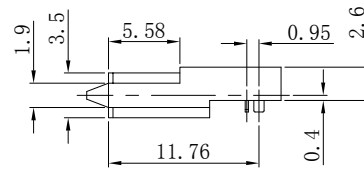
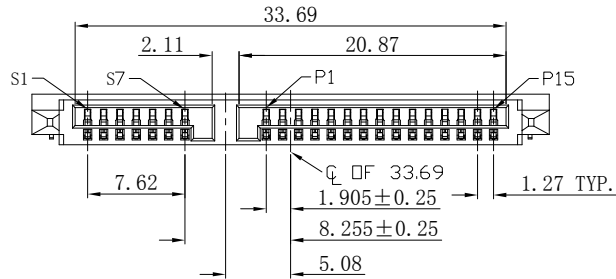


RoHS  
HF



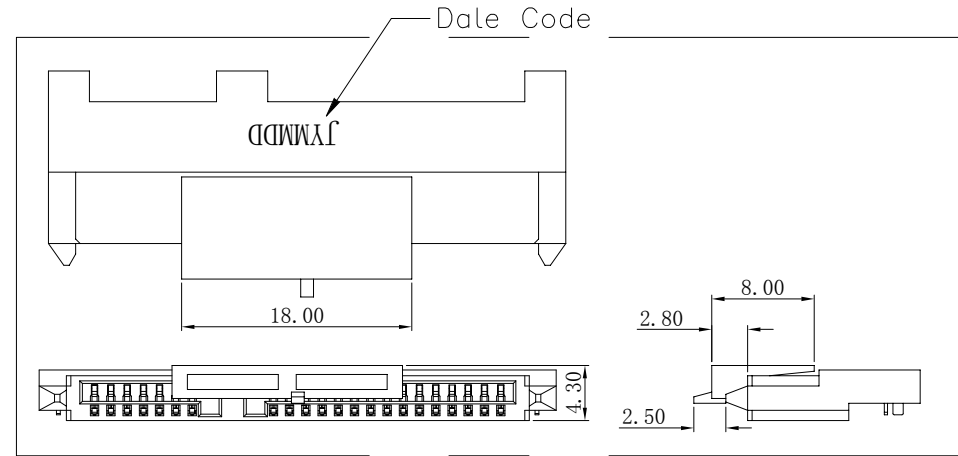
NOTES:

- MATERIAL:  
HOUSING: THERMOPLASTIC, UL94 V-0, BLACK;  
TERMINAL: COPPER ALLOY;  
METAL CLIP: COPPER ALLOY;
- FINISHED:  
TERMINAL: GOLD FLASH PLATED ON CONTACT AREA,  
TIN 100u" MIN. PLATED ON SOLDER TAILS,  
AND NICKEL UNDER-PLATED OVERALL;  
METAL CLIP: 100u" MATTE TIN, NICKEL 50u" MIN.  
UNDER-PLATED OVERALL.
- DATE CODE: J (JCTC) Y (YEAR), MM (MONTH), DD (DATE)



RECOMMENDED PCB LAYOUT (T=1.2mm)

TOLERANCE: ±0.05mm



WITH CAP

REV.	REVISION RECORD	DATE		GENERAL TOLERANCES		SCALE: 1:1	NAME	DATE	 苏州伟聚电子科技有限公司 TITLE: <b>2.60H 22pin SATA CONN</b>	PART. NO:	WSAF0422-0A00	
<b>A</b>	New edition	10/28-15'		UNIT: MM	LINEAR	ANGLES	APPROVED				DWG. NO:	630-0000-0003
			SIZE: A4	0.0 ± 0.30	X' ± 6'	DESIGNER	WSM	10/28-15'	REV:	A	SHEET:	1/1
				0.00 ± 0.20	X.X' ± 3'	DRAWN						
				0.000 ± 0.10	X.XX ± 2'							