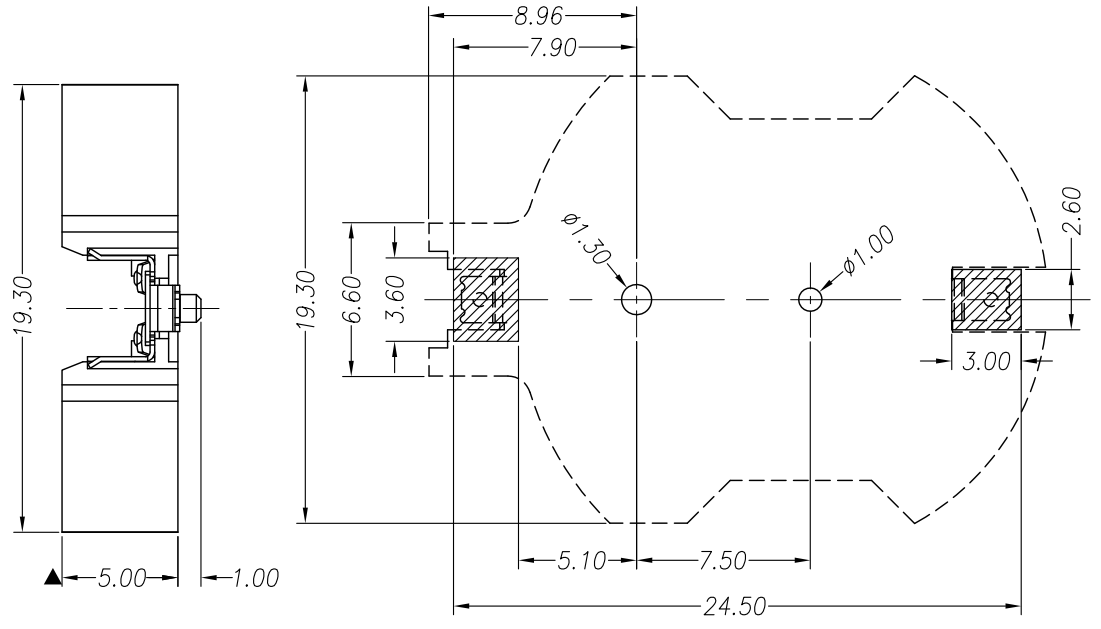
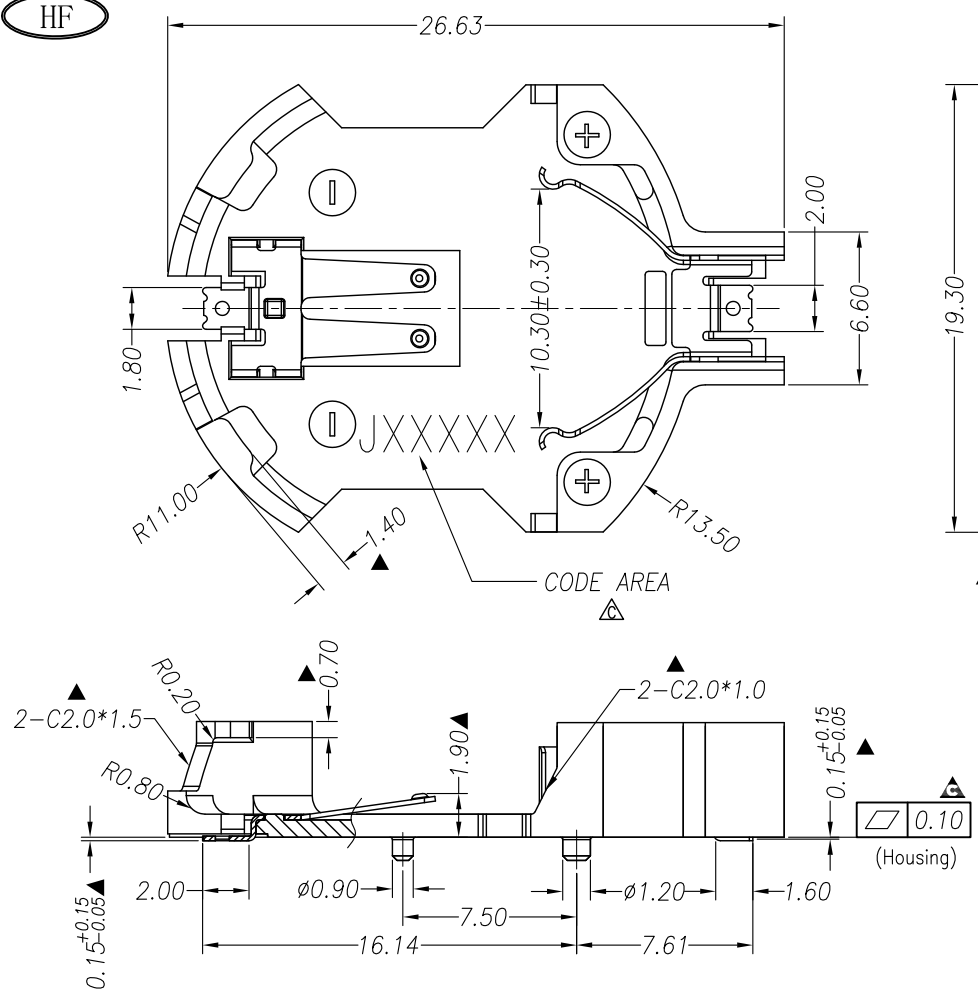
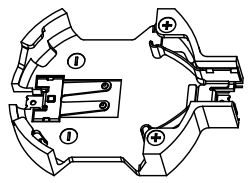


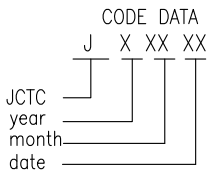
RoHS  
HF



RECOMMENDED PCB LAYOUT (TOP VIEW)  
PCB=1.20 ± 0.05mm



- Notes:
1. Dielectric Withstanding Voltage : 500VAC/minute
  2. Insulation Resistance: 1000M $\Omega$ . Current rating: 1 A
  4. Rated voltage: 50V AC/DC
  5. Contact Resistance: 50m $\Omega$
  6.  $\blacktriangle$  Mark is major DIM.  $\blacktriangle$  Mark is CPK DIM.
  7. After IR, the planeness of housing: 0.12mm Max.
  8. Part NO. W5000102-002



02: 2PIN  
Battery series

PART	Q'TY	MATERIAL&FINISH
Housing	1	LCP E6808, UL94V-0(Black)
Terminal 1	1	SUS304/30u" Sn plated on contact area, 80u" Sn
Terminal 2	1	plated on solder area, Ni plated over all

REV.	REVISION RECORD	DATE	UNIT: MM	GENERAL TOLERANCES		SCALE: 1:1	NAME	DATE
				LINEAR	ANGLES			
A	New edition	6.11'14		0.0 ±0.25	X*REF ± 6°	APPROVED		
B	(WN1406230001) 10.30REF-->10.30 ± 0.30	6.23'14		0.00 ±0.15	X* ± 3°	DESIGNER		
C	CORRECT CODE AREA	1.8'16	SIZE: A4	0.000±0.05	X*X' ± 2°	DRAWN	YXY	1.8'16

**WJCT**

苏州伟聚电子科技有限公司

TITLE: CR2032 Round Battery Holder  
(加强版)

PART NO:	W5000102-002
DWG NO:	CW5000102-002
REV:	D
SHEET:	1/1