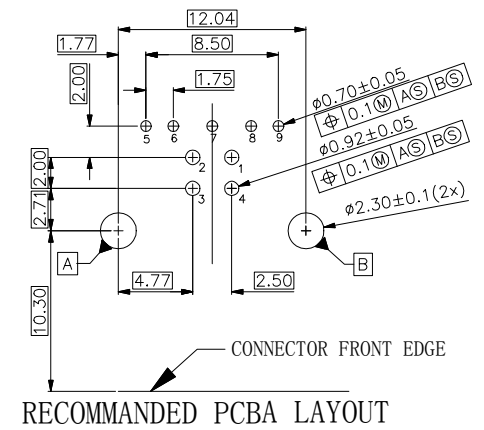
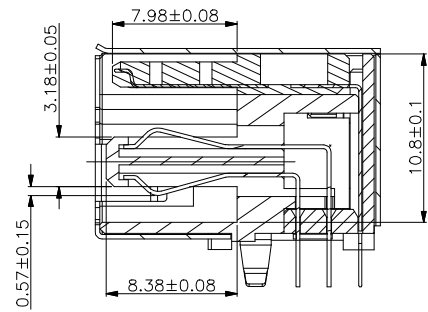
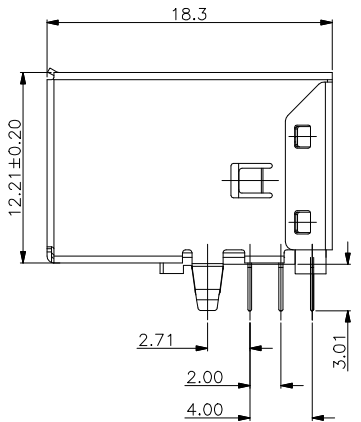
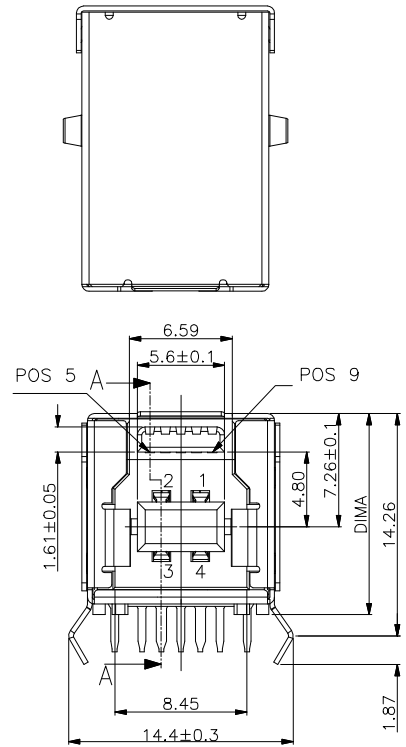


RoHS

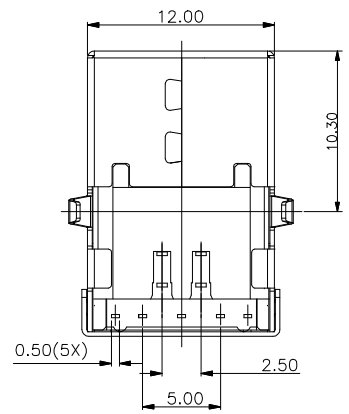


SECTION A-A

NOTE:

1. MATERIAL:
  - 1.1 INSULATOR: HIGH TEMPERATURE PLASTIC ;BLUE
  - 1.2 CONTACT: COPPER ALLOY
  - 1.3 SHELL: SPCC/BRASS/ STAINLESS STEEL
2. ELECTRICAL CHARACTERISTICS:
  - 2.1 CONTACT RESISTANCE: 30m  $\Omega$  Max
  - 2.2 CONTACT CURRENT RATING: 1.5A
  - 2.3 DIELECTRIC WITHSTANDING VOLTAGE: 100 V AC R. M. S.
  - 2.4 INSULATION RESISTANCE 100 MEGOHMS M in
  - 2.5 OPERATING TEMPERATURE : -40° C ~ 85° C
3. MECHANICAL CHARACTERISTICS:
  - 3.1 MATING FORCE: 35 N Max
  - 3.2 UNMATED FORCE: 10 N Min

Pin NUMBER	SIGNAL NAME
1	VBUS
2	D-
3	D+
4	GND
5	StdB_SSTX-
6	StdB_SSTX+
7	GND_DRAIN
8	StdB_SSRX-
9	StdB_SSRX+
Shell	Shield



REV.	REVISION RECORD	DATE	GENERAL TOLERANCES		SCALE:	NAME	DATE	PART.NO:
			LINEAR	ANGLES				
			0.0 ±0.30	X'REF ± 6°	APPROVED	Bing Shao	05.09.14	W-00-0154-0900
			0.00 ±0.20	X' ± 3'	DESIGNER	Peak.ke	05.09.14	DWG.NO:
			0.000±0.10	X'X' ± 2'	DRAWN	Allen.Zheng	05.09.14	W-00-0154-0900
								REV: A SHEET: 1/1

**WJCT**

苏州伟聚电子科技有限公司

TITLE:

USB 3.0 BF 90度DIP弯脚

PART.NO: W-00-0154-0900  
 DWG.NO: W-00-0154-0900  
 REV: A SHEET: 1/1