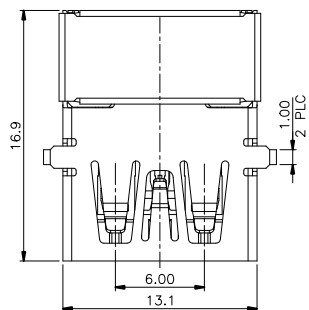
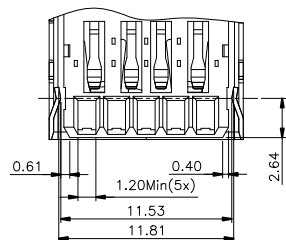


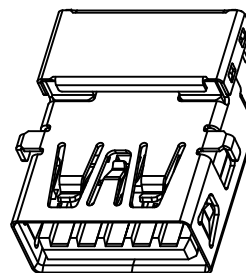
RoHS
HF



(TOP VIEW)

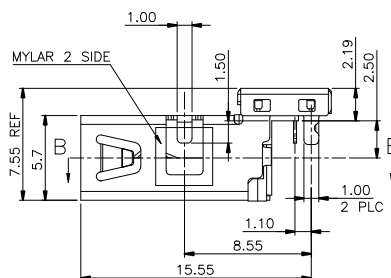
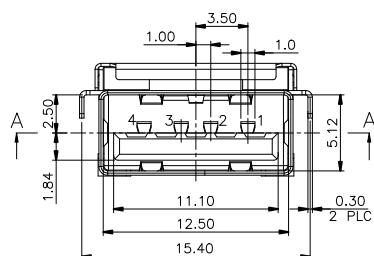


SECTION A-A

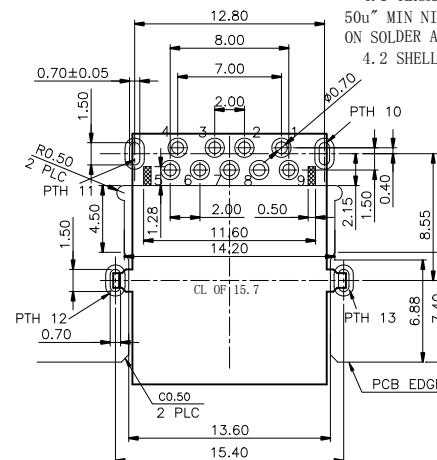


NOTE:

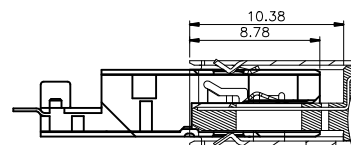
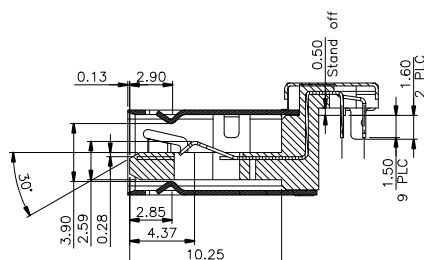
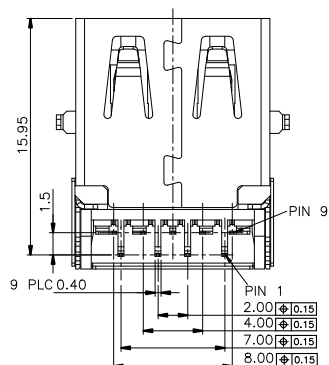
1. MATERIAL:
 - 1.1 INSULATOR:HIGH TEMPERATURE PLASTIC UL 94 V-0;BLUE
 - 1.2 CONTACT:COPPER ALLOY(T=0.20mm)
 - 1.3 SHELL:SUS201(T=0.30mm)
2. ELECTRICAL CHARACTERISTICS:
 - 2.1 CONTACTRESISTANCE:30uΩ Max
 - 2.2 CONTACT CURRENT RATING:1.5A
 - 2.3 DIELECTRIC WITHSTANDING VOLTAGE:500 V R.M.S.
 - 2.4 INSULATION RESISTANCE 100 MEGOHMS Min
 - 2.5 OPERATING TEMPERATURE:-40° C ~ 85° C
3. MECHANICAL CHARACTERISTICS:
 - 3.1 MATING FORCE:35 N Max
 - 3.2 UNMATED FORCE:10 N Min INITIAL; 8 N Min AFTER TEST
 - 3.3 DURABILITY:5,000 CYCLES
4. PLATING
 - 4.1 TERMINAL CONTACT:(SEE TAB) GOLD PLATING ALL OVER
50u" MIN NICKEL AND 80u"MIN Tin ALL OVER 50u" MIN NICKEL ON SOLDER AREA
 - 4.2 SHELL:50u"MIN.NICEL ALL OVER



SECTION B-B



TOLERANCE: ±0.05, THICKNESS: 1.2mm
RECOMMENDED PCB LAYOUT
(TOP VIEW)
KEEP OUT AREA



Pin #	SIGNAL NAME	DESCRIPTION	MATING SEQUENCE
1	VBUS	POWER	SECOND
2	D-	USB 2.0 DIFFERENTIAL PAIR	THIRD
3	D+		
4	GND	GROUND FOR POWER RETURN	SECOND
5	StdA_SSRX-	SUPERSPEED RECEIVER DIFFERENTIAL PAIR	LAST
6	StdA_SSRX+		
7	GND_DRAIN	GROUND FOR SIGNAL RETURN	
8	StdA_SSTX-	SUPERSPEED TRANSMITTER DIFFERENTIAL PAIR	
9	StdA_SSTX+		
Shell	Shield	CONNECTOR METAL SHELL	FRIST

REV.	REVISION RECORD	DATE	GENERAL TOLERANCES		SCALE:	NAME	DATE	WJCT 苏州伟聚电子科技有限公司 TITLE: USB3 AF RVS S-2.50mm L16.9mm DIP	PART NO.:
				LINEAR	APPROVED	Binghao	05.09.12		DWG. NO.:
				ANGLES					DESIGNER
			UNIT: MM	0.00 ±0.15	DRAWN	Allen.Zheng	05.09.12		REV: A
			SIZE: A4	0.000±0.10				SHEET: 1/1	