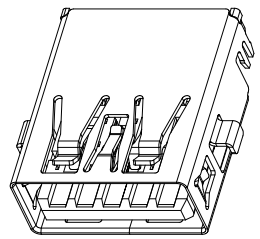
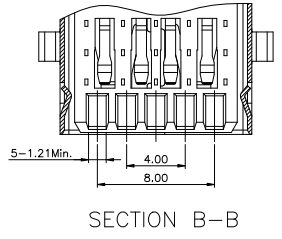
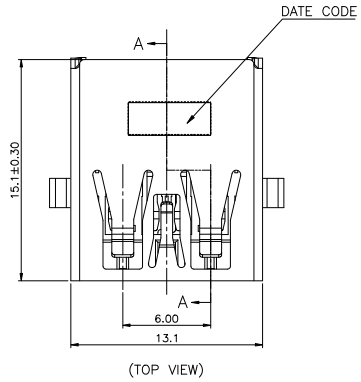
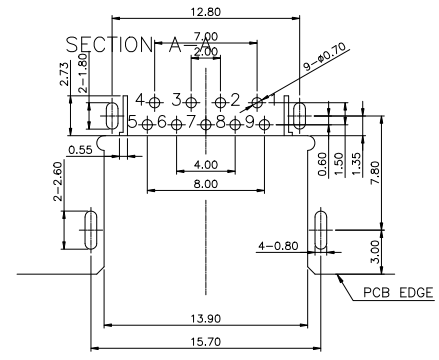
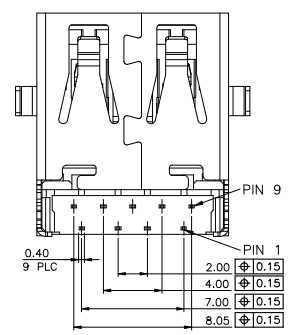
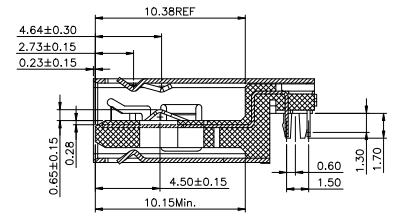
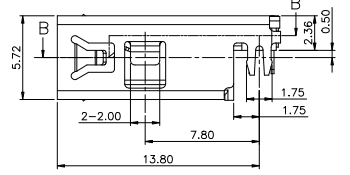
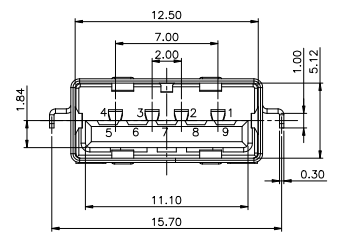


RoHS  
HF



- NOTE:
- MATERIAL:
    - INSULATOR: HIGH TEMPERATURE PLASTIC UL 94 V-0;
    - CONTACT: COPPER ALLOY (T=0.20mm)
    - SHELL: SUS201 (T=0.30mm)
  - ELECTRICAL CHARACTERISTICS:
    - CONTACT RESISTANCE: 30mΩ Max
    - CONTACT CURRENT RATING: 1.5A
    - DIELECTRIC WITHSTANDING VOLTAGE: 500 V R.M.S.
    - INSULATION RESISTANCE: 100 MEGOHMS Min
    - OPERATING TEMPERATURE: -40° C ~ 85° C
  - MECHANICAL CHARACTERISTICS:
    - MATING FORCE: 35 N Max
    - UNMATED FORCE: 10 N Min INITIAL; 8 N Min AFTER TEST
    - DURABILITY: 5,000 CYCLES
  - PLATING:
    - TERMINAL CONTACT: (SEE TAB) GOLD PLATING ALL OVER 50u" MIN NICKEL AND 80u" MIN Tin ALL OVER 50u" MIN NICKEL ON SOLDER AREA
    - SHELL: 50u" MIN. NICKEL ALL OVER



TOLERANCE: ±0.05, THICKNESS: 1.2mm  
RECOMMENDED PCB LAYOUT  
(TOP VIEW)  
KEEP OUT AREA

Pin #	SIGNAL NAME	DESCRIPTION	MATING SEQUENCE
1	VBUS	POWER	SECOND
2	D-	USB 2.0 DIFFERENTIAL PAIR	THIRD
3	D+	DIFFERENTIAL PAIR	
4	GND	GROUND FOR POWER RETURN	SECOND
5	StdA_SSRX-	SUPERSPEED RECEIVER DIFFERENTIAL PAIR	LAST
6	StdA_SSRX+	DIFFERENTIAL PAIR	
7	GND_DRAIN	GROUND FOR SIGNAL RETURN	
8	StdA_SSTX-	SUPERSPEED TRANSMITTER DIFFERENTIAL PAIR	
9	StdA_SSTX+	DIFFERENTIAL PAIR	
Shell	Shield	CONNECTOR METAL SHELL	FRIST

REV.	REVISION RECORD	DATE	GENERAL TOLERANCES		SCALE:	NAME	DATE
			LINEAR	ANGLES			
			0.0 ±0.15	X'REF ± 6°	APPROVED	Binghao	05.09.14
			0.00 ±0.10	X' ± 3°	DESIGNER	Peak.ke	05.09.14
			0.000±0.08	X'X' ± 2°	DRAWN	Allen.Zheng	05.09.14

**WJCT**  
苏州伟聚电子科技有限公司

TITLE:  
USB 3.0 AF RVS CL-0.50mm H2.36mm L15.1mm DIP TYPE CONN.

PART.NO: W-26-0107-XX00
DWG.NO: W-26-0107-XX00
REV: A SHEET: 1/1