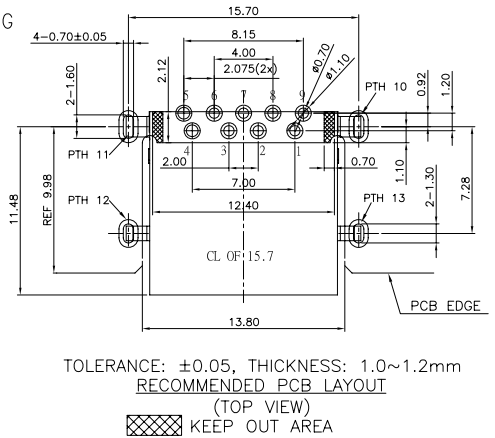
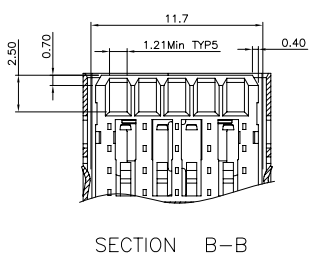
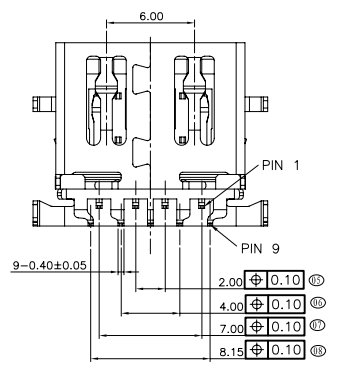
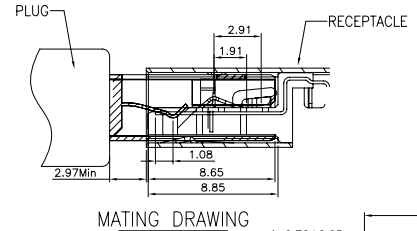
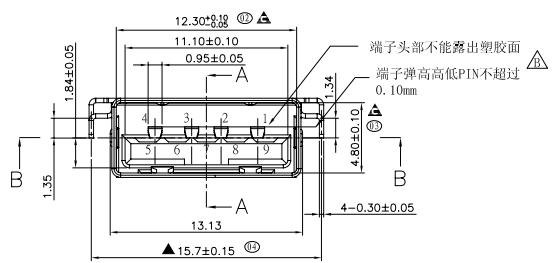
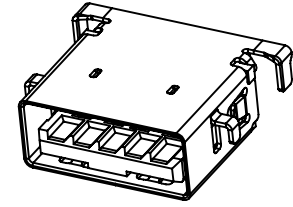
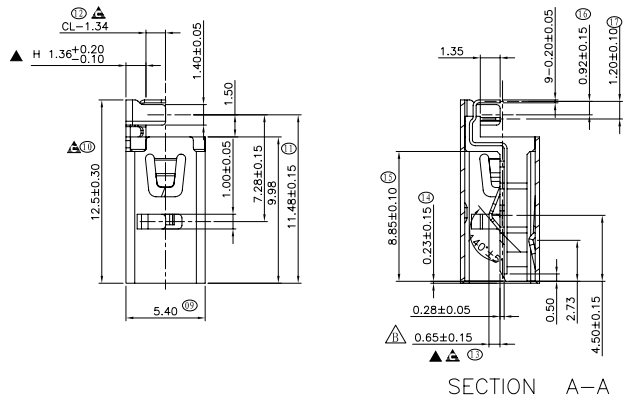
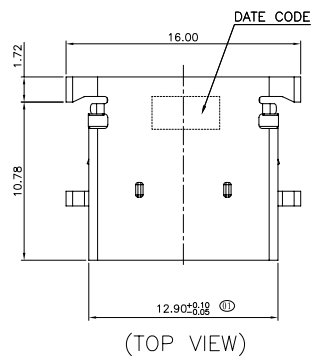


RoHS
HF



- NOTES:
- MATERIAL:
 - INSULATOR: HIGH TEMPERATURE PLASTIC UL 94 V-0; BLACK/BLUE
 - CONTACT: COPPER ALLOY (T=0.20mm)
 - SHELL: SUS201 (T=0.30mm)
 - ELECTRICAL CHARACTERISTICS:
 - CONTACT RESISTANCE: 30mΩ Max
 - CONTACT CURRENT RATING: 2A
 - DIELECTRIC WITHSTANDING VOLTAGE: 500 V R. M. S.
 - INSULATION RESISTANCE 100 MEGOHMS Min
 - OPERATING TEMPERATURE: -40° C ~ 85° C
 - MECHANICAL CHARACTERISTICS:
 - MATING FORCE: 25 N Max
 - UNMATED FORCE: 12N~25N INITIAL; 8 N Min AFTER TEST
 - DURABILITY: 5,000 CYCLES
 - PLATING:
 - TERMINAL CONTACT: 50u" MIN Ni UNDERPLATING, GOLD PLATING ON CONTACT AREA AND 80u" MIN MATTE TIN PLATING ON SOLDER AREA.
 - SHELL: 50u" MIN. SOLDERABLE NICKEL ALL OVER.
- ⊗ MARK IS MAJOR DIM. ▲ MARK IS CPK DIM.
▲ MARK IS IMPORTANT DIM.

6. PART NO. :
WUSF5509-0A00X
HOSING COLOR
U: BLUE
NO MARK: BLACK

Pin #	SIGNAL NAME	DESCRIPTION	MATING SEQUENCE
1	VBUS	POWER	SECOND
2	D-	USB 2.0 DIFFERENTIAL PAIR	THIRD
3	D+	DIFFERENTIAL PAIR	
4	GND	GROUND FOR POWER RETURN	SECOND
5	StdA_SSRX-	SUPERSPEED RECEIVER DIFFERENTIAL PAIR	LAST
6	StdA_SSRX+		
7	GND_DRAIN	GROUND FOR SIGNAL RETURN	
8	StdA_SSTX-	SUPERSPEED TRANSMITTER DIFFERENTIAL PAIR	
9	StdA_SSTX+		
Shell	Shield	CONNECTOR METAL SHELL	FIRST

No.	Part Name	Q'TY	Material	Finish
1	HOUSING	1	LCP E471i	BLACK
2	SHELL	1	SUS201 H	Ni PLATING
3	CONTACT TERMINAL	9	C5210 EH	SEE NOTES

REV.	REVISION RECORD	DATE	GENERAL TOLERANCES	SCALE:	NAME	DATE	 苏州伟聚电子科技有限公司 TITLE: USB3.0 H1.36 L12.50mm DIP TYPE	PART NO.:
B	增加高低pin及端子头部的管控	2016.08.11	LINEAR	APPROVED				WUSF5509-0A00X
C	增加蓝色规格	2016.12.16	0.0 ±0.20	DESIGNER				DWG.NO: 605-0000-0036
			0.00 ±0.10	DRAWN				REV: C SHEET: 1/1