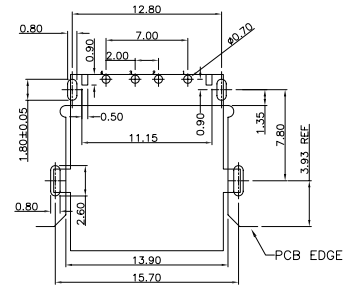
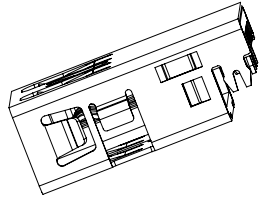
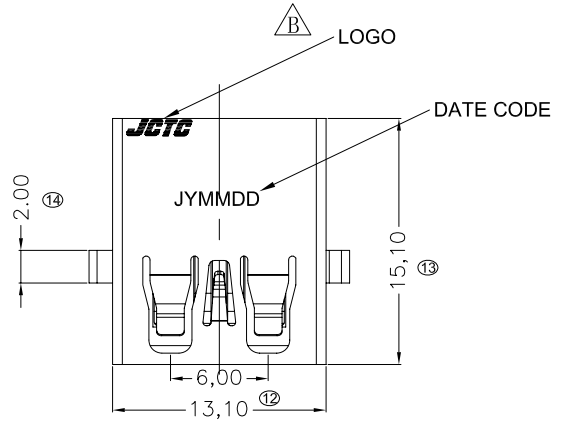
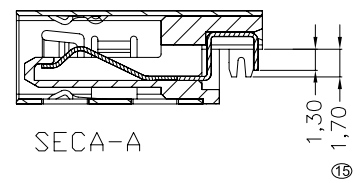
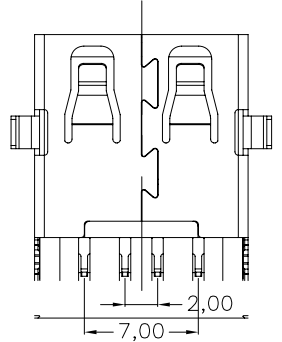
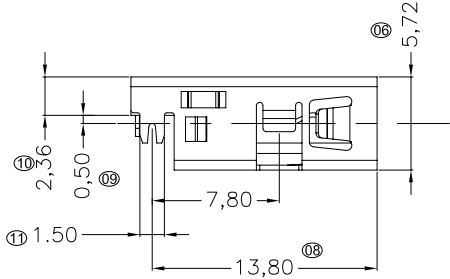
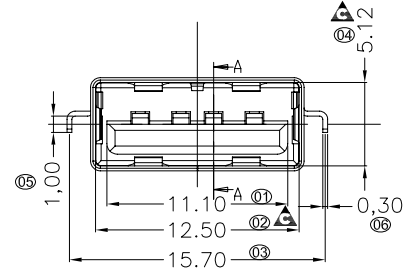


RoHS  
HF



RECOMMENDED P.C.B LAYOUT (COMPONENT SIDE)  
P.C.B THICKNESS T=1.2MM  
(TOLERANCE±0.05)

- NOTE:
- MATERIAL:
    - INSULATOR: HIGH TEMPERATURE PLASTIC UL 94 V-0;
    - CONTACT: COPPER ALLOY (T=0.20mm)
    - SHELL: SUS201 (T=0.30mm)
  - ELECTRICAL CHARACTERISTICS:
    - CONTACT RESISTANCE: 30mΩ Max
    - CONTACT CURRENT RATING: 1.5A
    - DIELECTRIC WITHSTANDING VOLTAGE: 500 V R. M. S.
    - INSULATION RESISTANCE 100 MEGOHMS Min
    - OPERATING TEMPERATURE: -40° C ~ 85° C
  - MECHANICAL CHARACTERISTICS:
    - MATING FORCE: 35 N Max
    - UNMATED FORCE: 10 N Min INITIAL; 8 N Min AFTER TEST
    - DURABILITY: 5,000 CYCLES
  - DATE CODE: J(JCTC)  
Y(YEAR),MM(MONTH),DD(DATE)
  - ⊗ MARK IS MAJOR DIM. ▲ MARK IS CPK DIM.



3	SHELL	SUS	T=0.30	NICKEL PLATED OVERALL	1
2	TERMINAL	C2680	T=0.25	Au:G/F Sn:80U Ni:30U	4
1	HOUSING	LCP	—	BK UL94-V0	1
NO.	PART NAME	MATERIAL	THICK	FINISH	Q'TY

REV.	REVISION RECORD	DATE	GENERAL TOLERANCES		SCALE:	NAME	DATE
A	NEW VERSION	8/20' 15	LINEAR	ANGLES	APPROVED		
B	Add the "JCTC" LOGO	12/21' 15	0.0 ±0.30	X'REF ± 6'	DESIGNER		
			UNIT: MM	0.00 ±0.20	X' ± 3'	DRAWN	MLF
			SIZE: A4	0.000±0.10	XX' ± 2'		12.20.15

**WJCT**  
苏州伟聚电子科技有限公司

TITLE: **USB A F 2.0 H 2.36**

PART.ND: W-26-0137-0400  
DWG.ND: W-26-0137-0400  
REV: **B** SHEET: **1/1**